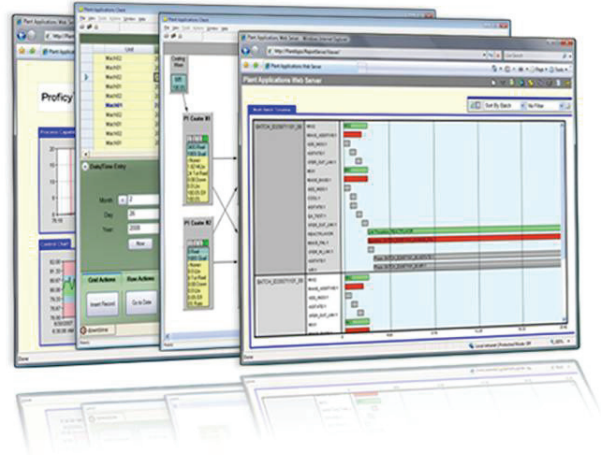




Proficy Plant Applications Efficiency

Course Description

Proficy Plant Applications Efficiency training will teach the student how to configure the Plant Applications software to produce Efficiency related metrics for their plant environment. This course provides an introduction to the concept of Efficiency Management and Overall Equipment Effectiveness. This includes learning to configure Downtime, Waste and Production Metrics (OEE). Students will also be taught how to utilize captured Plant Applications data in web enabled analytical tools to explore the why, what and when that impacts manufacturing efficiency. Valuable hands-on lab exercises are provided which guide students through the configuration of the out-of-the-box capabilities of the Proficy Plant Applications Efficiency Module.



Who Should Attend?

Administrators of Proficy Plant Applications who want to configure the Plant Applications Efficiency module.

Are There Any Prerequisites?

Participants should have successfully completed the Proficy Plant Applications Fundamentals classroom training or have equivalent experience.

What Tasks Will Be Taught in This Class?

Upon completion of this Course, the student will be able to:

- Briefly describe the overall capabilities of Plant Applications.
- Explain the concept of Overall Equipment Effectiveness (OEE).
- Configure and track Downtime.
- Configure and track Waste.
- Configure and generate Production Metrics.
- List the available efficiency related reports in Plant Applications and explain the function of each

Course Length:

2 days

Suggested Class Size:

8 students

Course Hours:

9:00 am – 5:00 pm Thursday - Friday



Proficiency Plant Applications – Efficiency

Course Agenda *(Schedule and content may vary)*

Day 1

Morning

Introduction to the Efficiency Module

Introduce the features of the Plant Applications Efficiency Module. Describe the Overall Equipment Effectiveness (O.E.E) concept and define the components of the Plant Applications Efficiency Calculation.

Downtime Overview

Introduce the concept of “downtime” and how Plant Applications handles Downtime Events. Configure Slave Units, Faults, Downtime Events, Reasons, and Reason Trees. Build Downtime Unit View, Autolog Uptime and Downtime Displays.

Afternoon

Downtime Configuration

Configure Automatic Downtime Detection using a Downtime Event Model. Build a Downtime Line View Display. Run and view Downtime related Reports and Web Parts.

Production Counting

Gain knowledge of how production data collection is accomplished for Production Units in Plant Applications with the use of Production Count Variables.

Day 2

Morning

Waste Overview

Discover what exactly “Waste” is and how Plant Applications monitors and records Waste Events. Configure Waste Events, Conversion Types, and Waste Displays and Manually Enter Waste Information. Build a Waste View Display.

Waste Configuration

Configure Automatic Waste Detection using Time-based and Event-based Waste Models. Run and view Waste related Reports and Web Parts.

Afternoon

Production Metrics I

Configure Production Metrics (OEE) on a Production Unit in Plant Applications.

Production Metrics II

Run, View and Analyze OEE/Production Metric related Reports, Web Parts and Active Server Applications.

Supplemental

Efficiency Reporting

Learn the basic features of the Excel Add in to generate Downtime, Waste and Production Count Reports.

Sequence of Events Application

Learn how this “real-time” application is utilized to review Plant Applications Events in sequence with Efficiency Management related events such as Downtime and Waste. Configure User Defined Events.