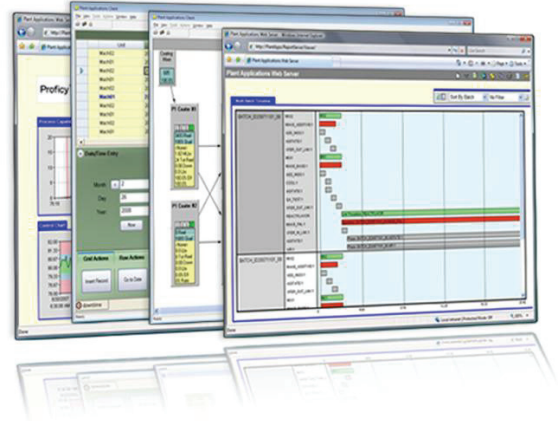




Proficiency Plant Applications Fundamentals

Course Description

Proficiency Plant Applications Fundamentals will teach the student how to configure and maintain Plant Applications software. This course provides an entry-level introduction to fundamental Plant Applications capabilities and applications. This includes learning to configure the Plant Model, Products, Production Events, Variables, User Displays and User Security. Students will also be taught Report Server Administration and Web Client functionality, how to extract data from the Plant Applications database using the Excel Add-In and display results through the Plant Applications Web interface. Valuable hands-on lab exercises are provided which guide students through the configuration of the out-of-the-box capabilities of Proficiency Plant Applications.



Who Should Attend?

The course is intended for Plant Applications Administrators that are responsible for configuration and support of the software within their organization.

Are There Any Prerequisites?

Participants should have a basic understanding of Microsoft SQL Server, Microsoft Internet Information Server (IIS) & Microsoft Excel. They should also have an understanding of basic manufacturing terminology.

What Tasks Will Be Taught in This Class?

Upon completion of this Course, the student will be able to:

- Configure Plant Applications software.
- Extract data from the Plant applications database.
- Display results through the Plant Applications web interface.
- Describe Plant Applications architecture and design.
- Utilize the tools of Plant Application to maintain and enhance their environment.
- Overview the reporting capabilities of Plant Applications

Course Length: 3 days

Suggested Class Size: 8 students

Course Hours: 9:00 am – 5:00 pm, Monday through Wednesday



Proficy Plant Applications – Fundamentals

Course Agenda *(Schedule and content may vary)*

Day 1

Morning

Introduction to Proficy Plant Applications

Study the basic features and design of Proficy Plant Applications and the Plant Applications Administrator.

Historian Connections

Configure Data Sources for Plant Applications

Plant Model

Configure Departments, Production Lines, Production Units and Variables. Learn to use the Import/Export tool of Plant Applications.

Afternoon

Defining Variables

Configure Time-Based Variables and learn key variable properties.

Time Based Autolog

Study the capabilities of the Plant Applications Client. Build a Time Based Autolog display and review display configuration and properties.

Production Events

Configure Production Event type Variables and Production Events on Production Units and learn how to Automatically detect them.

Day 2

Morning

Event Based Autolog

Create an Autolog Production Event display and configure its properties. Build a User View.

System Calculations

Learn how to acquire data from Process Historians, including other Plant Applications Variables, and aggregate the data as needed

Custom Calculations

Create Calculations using the Equation Editor, VB Script, and Stored Procedures.

Afternoon

Product Management

Configure Products and assign them to production units. Explore Product Change Events.

Plant Applications Security & Maintenance

Configure Administrator Security and User (Data Level) Security and review 21CFR11 Functionality
Learn Routine Maintenance Tasks, Troubleshooting Tools and Techniques.

Day 3

Morning

Introduction to GE Proficy Plant Applications Reporting & Reporting Clients

Study the basic features and design of the Reporting Client. View reports/run Ad-Hoc reports. Learn the capabilities of Plant Applications Web Parts. Learn how to use them inside a Portal.

Web Report Server Administration

Learn the architecture of the Web Report Server. Configure Reports and User Menus. Configure Reports to automatically run on a Schedule.

Afternoon

Excel Add-in

Acquire Plant Applications data directly into Excel using the Excel Add-In. Upload a report built using the Excel Add-In to the Report Server and automate it for use within the Web Based Reporting Client.

Web Part Administrator

Configure Web parts for use inside a Portal.