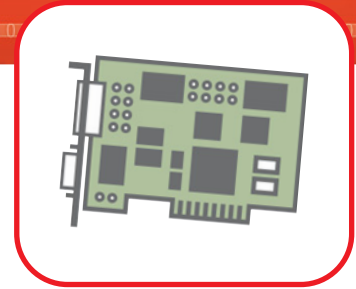


CIF – Communication Interface



PC cards as fieldbus interface

- All PC board formats can be supplied
- Identical 'easy to use' application interface for all leading fieldbusses
- One driver for all fieldbusses and board types
- One configuration software
- 'Plug and play' kits for SCADA and Soft SPSen of all leading manufacturers

Fieldbus integration for PC-based systems

Whether as Master or Slave, fieldbus systems have been proven themselves excellently in PC-based automation. For more than 10 years, the CIF communication interface cards from the Hilscher Company are used successfully in the most varied areas of application and are now a standard in the market.

PC cards in all formats

With the CIF communication interface, the user will have a unified standard for all the fieldbus systems on different hardware platforms.

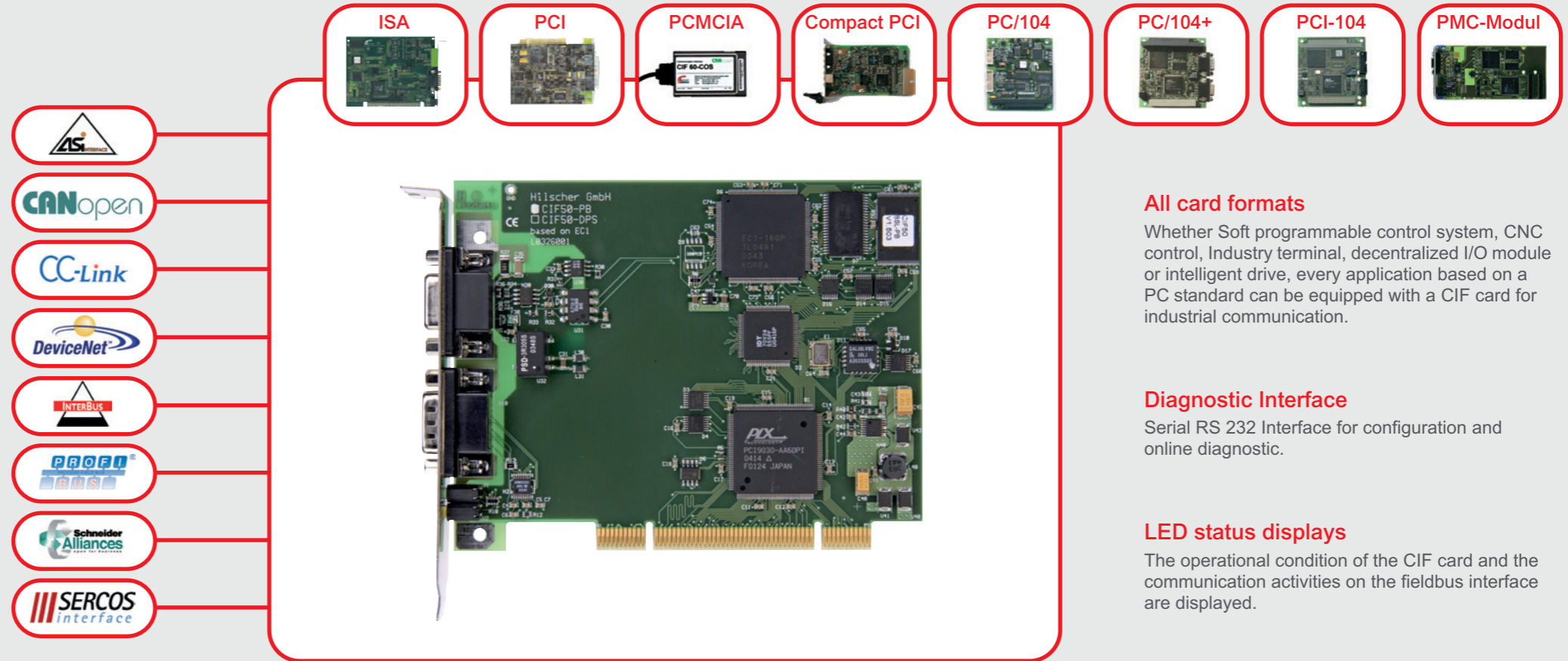
We supply our PC communication cards with ISA or PC/104 respectively PCI busses in standard, PC/104+, PCI-104, Compact PCI or PMC format respectively as PCMCIA card for all leading fieldbus systems.

CIF – Communication Interface

Communication for PC based Automation

Fieldbus systems made easy

With a fieldbus card as a fieldbus Master, one always has the current process image of all configured Slave devices. With a CIF card for fieldbus Slave communication, the Dual port memory of the card serves as a process image which can be accessed from both sides at the same time. In both variants the user program need not concern itself with the actual fieldbus communication as this task is automatically undertaken by the CIF card, thanks to its own communication processor.



All card formats

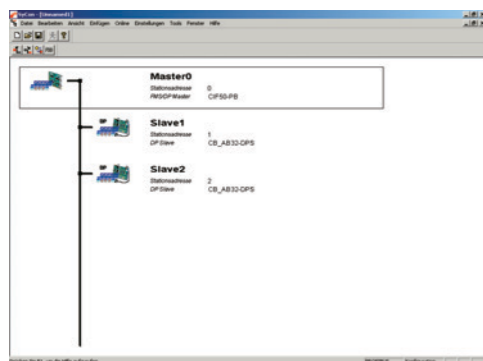
Whether Soft programmable control system, CNC control, Industry terminal, decentralized I/O module or intelligent drive, every application based on a PC standard can be equipped with a CIF card for industrial communication.

Diagnostic Interface

Serial RS 232 Interface for configuration and online diagnostic.

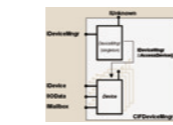
LED status displays

The operational condition of the CIF card and the communication activities on the fieldbus interface are displayed.



One configuration for all fieldbusses

The SyCon system configurator allows the uniform configuration of the communication relationship between fieldbus Slave devices and the Master. The configuration of the communication relationship to the individual Slave devices and the respective fieldbus Master are stored permanently down in the configuration memory of the CIF card.



Drivers

The universal CIF Device Driver and the function library DRV-TKIT present the basis for the execution of the fieldbus integration on the application level independently of the selected hardware platform. An integration once developed can then be used with every available fieldbus system. Drivers for many Soft PLC's are available.



The CIF OPC-Server is available for every fieldbus standard and all Windows-based operating systems. There are finished drivers available for many visualizing systems and with these the CIF cards can be accessed directly.

CIF – Technical Information

Special Developments

Do you need a special card with a special protocol?
We are in a position to meet your special needs. Challenge us ...

Technical Data

AS-Interface Master

2 Channels each with
62 Slaves
248 Input Bits/186 Output Bits

CANopen Slave Master

126 Nodes	7168 Byte I/O Data
Min. Boot up	Min. Boot up
COB ID Distribution: default/via SDO	COB ID Distribution: default/via SDO
Emergency Message	Emergency Message
Node/Life Guarding, Heartbeat	Node/Life Guarding, Heartbeat
Event Trigger	Event Trigger
PDO: Async	PDO: Cyclic, Acyclic, Async
Remote Request	Remote Request
32 Rx-/32 Tx-PDOs	

CC-Link Slave

Max. 4 Stations each with
64 Bit I/O Data
8 Words I/O Data
Polling

DeviceNet Slave Master

63 Slaves	7168 Byte I/O Data
510 Byte I/O Data	Explicit, Polling, Bit-strobe, Cyclic, Change of State
UCMM via Group 1, 2, 3, Predefined Connection Set	Predefined Connection Set

InterBus Slave Master

128 Slaves	1024 Byte I/O Data
20 Words I/O Data	PCP Channel
PCP Channel, 2 Words	InterBus Loop
	Generation 4

Open Modbus/TCP

Client/Server

PROFIBUS-DP Slave Master

125 Slaves	7168 Byte I/O Data
368 Byte I/O Data	DPV1 Extensions
DPV1 Extensions	Class 1 and 2 Services
Class 1 and 2 Services	Class 1 and 2 Services
	MPI functions

SERCOS Passiv Master

SERCON 816	Max. 8 Drives
------------	---------------

Diagnostic Interface

RS232C, Non isolated
A diagnostic interface ist not available on the following devices: CIF 60, PMC, CIF xx-IBS and CIF xx-SCEB.

Operating Voltages / Operating Temperature

CIF 30	+5 V ±5 % / 500-650 mA
	±12 V ±5 % / 50 mA
CIF 50	+3,3 V ±5 % / 350-1410 mA
	+5 V ±5 % / 250-580 mA
CIF 50-SCM	+5 V ±5 % / 400 mA
CIF 60	+5 V ±5 % / 650 mA
CIF 80	+3,3 V ±5 % / 500-560 mA
	+5 V ±5 % / 300-500 mA
CIF 104	+5 V ±5% / 300-650 mA
CIF 104P, CIF 104C, PMC	+3,3 V ±5 % / 400 mA
	+5 V ±5 % / 50-300 mA
CIF xx-SCEB	+5 V ±5 % / 250 mA
0 ... 55 °C	

Product Overview

Fieldbus ISA Slave Master

AS-Interface	CIF 30		-ASM
CANopen	CIF 30	-COS	-COM
DeviceNet	CIF 30	-DNS	-DNM
InterBus	CIF 30	-IBS	-IBM
Modbus Plus	CIF 30-MBP		
PROFIBUS	CIF 30	-DPS	-PB

Fieldbus PCI Slave Master

AS-Interface	CIF 50		-ASM
CANopen	CIF 50	-COS	-COM
CC-Link	CIF 50	-CCS	
DeviceNet	CIF 50	-DNS	-DNM
InterBus	CIF 50	-IBS	-IBM
Modbus Plus	CIF 50-MBP		
PROFIBUS	CIF 50	-DPS	-PB
SERCOS	CIF 50-SCM*		
SERCOS	CIF 50-SCEB passiv*		

Fieldbus PCMCIA Slave Master

CANopen	CIF 60	-COS	-COM
DeviceNet	CIF 60	-DNS	-DNM
PROFIBUS	CIF 60	-DPS	-PB
SERCOS	CIF 60-SCEB passiv*		

Fieldbus Compact PCI Slave Master

CANopen	CIF 80	-COS	-COM
DeviceNet	CIF 80	-DNS	-DNM
PROFIBUS	CIF 80	-DPS	-PB

Fieldbus PC/104 Slave Master

AS-Interface	CIF 104		-ASM
CANopen	CIF 104	-COS	-COM
CC-Link	CIF 104	-CCS	
DeviceNet	CIF 104	-DNS	-DNM
InterBus	CIF 104	-IBS	-IBM
Modbus Plus	CIF 104-MBP		
PROFIBUS	CIF 104	-DPS	-PB
SERCOS	CIF 104-SCEB passiv*		

Fieldbus PC/104+ Slave Master

CANopen	CIF 104P	-COS	-COM
DeviceNet	CIF 104P	-DNS	-DNM
PROFIBUS	CIF 104P	-DPS	-PB

Fieldbus PCI-104 Slave Master

CANopen	CIF 104C	-COS	-COM
DeviceNet	CIF 104C	-DNS	-DNM
PROFIBUS	CIF 104C	-DPS	-PB

Fieldbus PCI Mezzanine Card Slave Master

CANopen	PMC	-COS	-COM
DeviceNet	PMC	-DNS	-DNM
PROFIBUS	PMC	-DPS	-PB

* CIF 50-SCM, CIF 50-SCEB, CIF 60-SCEB, CIF 104-SCEB are not supported by the CIF Device Driver. These devices need an own driver.

Headquarters

Germany
Hilscher Gesellschaft für Systemautomation mbH
Rheinstrasse 15
65795 Hattersheim
Phone: +49 (0) 6190 9907-0
Fax: +49 (0) 6190 9907-50
E-Mail: info@hilscher.com
Web: www.hilscher.com

Subsidiaries

China
Hilscher Ges.f.Systemaut. mbH
Shanghai Representative Office
200010 Shanghai
Phone: +86 (0) 21-6355-5161
E-Mail: info@hilscher.cn

France
Hilscher France S.a.r.l.
69500 Bron
Phone: +33 (0) 4 72 37 98 40
E-Mail: info@hilscher.fr

Italy
Hilscher Italia srl
20090 Vimodrone (MI)
Phone: +39 02 25007068
E-Mail: info@hilscher.it

Japan
Hilscher Japan KK
Tokyo, 160-0022
Phone: +81 (0) 3-5362-0521
E-Mail: info@hilscher.jp

Switzerland
Hilscher Swiss GmbH
4500 Solothurn
Phone: +41 (0) 32 623 6633
E-Mail: info@hilscher.ch

Hilscher Swiss GmbH
Branch Office East Switzerland
Embedded Systems
9444 Diepoldsau
Phone: +41 (0) 71 737 7575
E-Mail: info@hilscher.ch

USA
Hilscher North America, Inc.
Lisle, IL 60532
Phone: +1 630-505-5301
E-Mail: info@hilscher.us

Distributors

Australia
Fieldbus Specialists
www.fieldbus.com.au

Austria
VIPA Elektronik-Systeme GmbH
www.vipa.at

Belgium
TelereX N.V.
www.telereX-europe.com

Brazil
SoftBrasil Automacao Ltda.
www.softbrasil.com.br

Czech Republic
ZPA-Industry a.s.
www.zpaindustry.cz

Denmark
Novotek Denmark A/S
www.novotek.dk

Finland
Novotek Finland Oy
www.novotek.fi

France
HIGH COM
www.highcom.fr

Korea
CREVIS Co.,LTD
www.crevis.co.kr

Netherlands
TelereX Nederland B.V.
www.telereX-europe.com

Norway
AD Elektronik AS
www.ade.no

Poland
RAControls SP. z o.o.
www.racontrols.com.pl

Russia
ProSoft Ltd.
www.prosoft.ru

Singapore
Vector Info Tech Pte Ltd
www.vectorinfotech.com

South Africa
Innomatic
www.innomatic.co.za

Spain
Sistel Control s.l.
www.sistelcontrol.com

Sweden
Novotek Sverige AB
www.novotek.se

UK
Miles Industrial Electronics Ltd
www.milesie.co.uk